



King's College

TAUNTON

Behaviour Policy

Responsibility

Individual: Deputy Head (Pastoral)

Review

Last review date: August 2020

Next review date: August 2021

INTRODUCTION

King's College aims to encourage pupils to adopt the highest standards of behaviour, principles and moral standards. We aim to promote trust and mutual respect. We believe that good relations, good manners and a secure learning environment play a crucial part in the development of intellectually curious pupils, who are motivated to become life-long learners. We develop qualities of team-work and leadership through our extensive programme of co-curricular activities.

King's College is an inclusive community. We welcome pupils from a wide variety of backgrounds and faiths. We treat everyone as an individual and aim to develop the whole person.

CODE OF CONDUCT

King's College sees education as a partnership. Our staff are committed to excellence, aiming to achieve a spirit of trust and cooperation. We expect the highest values and standards of behaviour both inside and outside the classroom, as well as outside the School and in any written or electronic communication concerning the School.

We expect pupils to treat staff and each other with consideration and good manners and to respond positively to the opportunities and demands of School life. They should follow the School's Rules and Regulations.

Everyone has a right to feel secure and to be treated with respect, particularly the vulnerable. Harassment and bullying will not be tolerated. Our Anti-bullying policy is published on our website and paper copies are available on request. The School is strongly committed to promoting equal opportunities for all, regardless of race, gender, gender orientation, faith or physical disability.

We expect pupils to be ready to learn and to participate in School activities. They should attend School and lessons punctually and follow the School's attendance and registration policy. They should care for the buildings, equipment and furniture. We expect pupils to behave at all times in the best interests of the whole community.

INVOLVEMENT OF PARENTS AND GUARDIANS

Parents and Guardians who accept a place for their child at King's College undertake to uphold the School's policies and regulations, including this policy. They will support the School's values in matters such as attendance and punctuality, behaviour, uniform/dress and appearance, standards of academic work, extra-curricular activities and prep / private study.

We will always telephone the home on the first day of an unexplained absence in order to make sure that an absent child has not suffered an accident. Please note that it is the School's policy usually not to allow holiday to be taken during school terms.

INVOLVEMENT OF PUPILS

Our experience shows that the ethos of and respect for the School is enhanced by listening to our pupils and by encouraging constructive suggestions from them. This process is facilitated by regular house meetings, prefect meetings, year group forums, the School's pupils' food committee and the Headmaster's weekly Open Door sessions.

SCHOOL RULES AND REGULATIONS

The School's Rules and Regulations are designed to encourage positive behaviour. Its sanctions are to help us to manage challenging behaviour. Copies of the main Rules and Regulations are published to all members of the community and each term in the School diary. They may change from time to time. Parents and Guardians undertake to support the authority of the Headmaster and his staff in enforcing them in a fair manner that is designed to safeguard the welfare of the community as a whole.

King's College undertakes to apply any sanctions fairly, and, where appropriate, after due investigative action has taken place. Sanctions may undergo reasonable change from time to time; but will not involve any form of unlawful or degrading activity. Examples of sanctions include: detention, withdrawal of privileges, assistance with domestic tasks (such as collecting litter or tidying lockers), suspension for a specified period, removal or expulsion. The School's policy on Discipline and Exclusions is published separately.

TEACHING AND LEARNING

King's College aims to raise the aspirations of all its pupils and to help them to appreciate that there are no barriers to their potential achievements both inside and outside the classroom. Pupils are encouraged to take responsibility for their own learning. We celebrate success, emphasise the positive and deal with the negative in a sensitive and tactful way. Our teaching staff offer our pupils a high level of individual attention, together with consistent and helpful advice. In return, we expect every pupil to cooperate and to work hard.

COMPLAINTS

We hope that pupils and parents do not have any complaints about the operation of our behaviour policy; but copies of the School's complaints procedure can be sent on request.

Appendix to Behaviour Policy - Rewards and Sanctions

Rewards

Achievement can be recognised as follows:

Academic

- Positive marking of work
- Positive reports
- Credits/distinctions for good work, the latter being awarded in School assembly
- Academic prizes at the end of the School year (3rd Form have form prizes, 4th, 5th and 6th Form have subject prizes)

Drama, Music, Community Service

- Special prizes awarded at the end of the School year
- School colours are awarded for achievement in music and drama
- Houses may also give colours for achievement in these areas

Sport

- Pupils win House and School colours for sport
- Presentation of cups and awards

Individual/Group achievements (e.g. national recognition, outstanding achievements)

- Acknowledgement in School assembly on Tuesday mornings
- By a notice on the Headmaster's board
- By verbal recognition
- They may also be recognised by an entry on the School's website, in School newsletters or in the annual magazine.

Good behaviour/general contribution

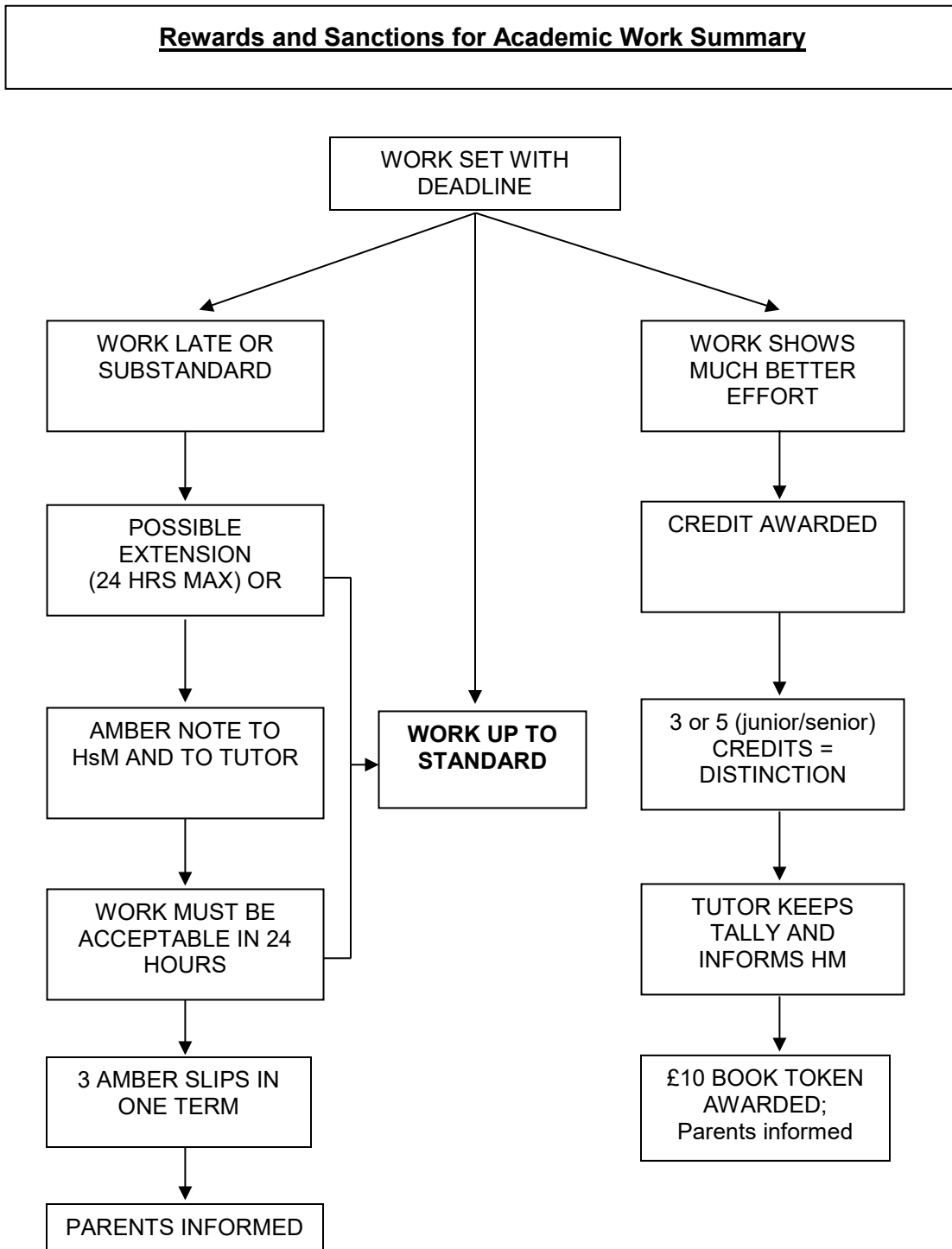
- The award of a commendation
- Acknowledgement in School assembly and chapel and house assemblies
- Positive House and Tutor reports
- Ferrett Prize – for all round unobtrusive contribution by a 4th form pupil
- Bolt Prize – for the outstanding all round contribution by a 5th form pupil
- Tonks Prize – for all round unobtrusive contribution by a Lower Sixth pupil
- Old Aluredian Prizes – for all round contributions by Upper Sixth pupils
- RAK Mott Prize – for all round contributions by a 3rd form pupil

Sanctions

The following sanctions for poor behaviour are guidelines and are reviewed regularly. They should be read in conjunction with specific policies/documents on Alcohol, Smoking, Drugs, Sex and Relationships, Bullying (including Cyberbullying) and guidance on gatings.

Offence	Authority	Punishment Level
Drug abuse and the supplying of drugs; sexual offences; breach of the law of the land (e.g. theft); serious bullying. Repeated other offences after warnings and prior suspension.	Headmaster	Expulsion
Expellable offences where clemency is possible; sexual impropriety; bringing spirits onto the site/ supplying spirits (see Alcohol policy for further details); continued smoking or drinking alcohol; alcohol consumption by lower school pupils; smoking or vaping indoors; bullying; violent/aggressive behaviour; leaving House during the night; excessive drinking by any pupil (see Alcohol policy for further details); persistent low level disruption.	Headmaster	Suspension
Repeated smoking or vaping; drinking alcohol/repeated drinking of alcohol (may lead to suspension - see above and Alcohol policy for further details); breaking House or Town gating (see below)	Deputy Head	Close gating - restriction to House area when not in Main School, signing in at hourly (or half-hourly) intervals during Wednesday/Saturday afternoons and at weekends. May be supplemented by Saturday detention or with community tasks as arranged by the Deputy Head, e.g. early morning chores, or tidying chapel or main school lockers. The only exeats allowed are to go home or to a guardian's home.
Smoking or vaping outdoors; drinking alcohol (see Alcohol policy) breaking bounds; persistent infringement of dress regulations; unacceptable haircut or hair dyeing; repeated late or poor work; failure to sign in or out of House as required	HsM/ Reported to Deputy Head	Town gating – confined to school in town time. Sixth formers may not attend the Senior Social Club if town-gated. House gating may be appropriate – restricted to House area from 7.00 pm onwards.
Unacceptable behaviour in class, e.g. rudeness, bad language, persistent lateness, disorganisation, work not done (after issuing an amber), deception, cutting a lesson or other school commitment. Persistent uniform/dress code infringement.	Member of staff	Detention during Wednesday afternoon.

Repeated cutting of class	Member of staff	Detention and see Headmaster
Repeated poor work or sufficiently poor interim report	HsM Tutor	Work report to be shown to tutor or to Housemaster/mistress
Poor behaviour in class or late/poor work	Member of staff	Departmental lunch-time detention
Lateness of any kind, e.g. rising, for lessons, for lights out, also minor bad behaviour or scruffiness	Member of staff	Tardy Book Report to duty staff at 7.30am
Dropping litter, chewing gum, spitting, dining hall offences	Member of staff liaising with Deputy Head	Litter patrol Dining room chores House tidying



Record of changes

July 2016 – by KLM

- Change of wording to reflect new house style guidance
- Change of wording to reflect new school routines

Feb 2017 – by KLM

- Change of wording to cross reference with sanctions ladder within Alcohol Policy

July 2017 – by KLM

- Amendment to prizes for all round contribution to include those previously omitted.

August 2019 – by KLM

- Change of wording to cross reference with updated sanctions ladder in Alcohol Policy.
- Change of wording to reflect sanctions for vaping included in Smoking Policy.

August 2020 – by KLM

- Updated with Coronavirus addendum

Coronavirus Addendum – September 2020

This addendum applies until further notice. We may need to amend or add to this addendum as circumstances or official guidance changes.

Expectations for pupils:

We expect all pupils to follow all of the rules set out below to keep themselves and the rest of the school community safe.

Staff will be familiar with these rules and will make sure they are followed consistently.

Parents should also read these rules and make sure that their children appreciate the importance of following the new procedures which are in place.

Pupils will be expected to:

- Sanitise hands when entering school buildings at the start of the day and throughout the day as appropriate
- Wash hands thoroughly after using toilet facilities and before and after eating
- Arrive at meals at agreed and directed times
- Follow good hygiene practice when coughing and sneezing ('catch it, bin it, kill it' advice) and avoid touching their eyes, nose or mouth
- Follow social distancing rules as appropriate, in particular maintaining a strict two-metre distance from pupils in other boarding and year group bubbles and all staff at all times
- Stay in agreed areas during the school day, as directed by staff
- Move through corridors sensibly, staying to the left hand side and not stopping to talk
- Tell an adult if they are experiencing symptoms of coronavirus
- Keep their own belongings to themselves and not share them, such as stationery or water bottles
- Take part in activities and lessons as directed, cleaning equipment as instructed
- Not cough, spit or sneeze towards any other person in a deliberate manner

We understand that pupils may forget rules regarding protective measures and hygiene. A warning will be given in the first instance, but repeated breaches of the Covid-safe rules will result in sanctions being applied.

The table below shows the likely consequences if the Covid-safe rules are not adhered to.

Category	Concerning behaviour related to Covid-19	Consequences
1	<ul style="list-style-type: none"> • Not following expectations in relation to cough/sneeze etiquette • Not following rules about sharing equipment • Not following instructions on hand hygiene • Not moving around school as per specific instructions • Not following social distancing instructions 	Warning given and houseparent informed
2	<ul style="list-style-type: none"> • Repeated breaches of the Covid-safe rules 	Detention given. Houseparent and KLM informed. Parent informed.
3	<ul style="list-style-type: none"> • Threatening to cough or sneeze on others to infect them with Covid • Deliberately tampering with hygiene materials • Deliberately tampering with or touching another pupil's belongings • Deliberately entering an area of the school which is out of bounds to that pupil • Deliberately moving between boarding or year group bubbles • Deliberately breaking social distancing rules 	Suspension – length of suspension to be decided by Headmaster
4	<ul style="list-style-type: none"> • Deliberately coughing, sneezing or spitting on anyone 	Indefinite suspension